

# Utilizing Virtual Fencing In Modern Grazing

## Producer Panel

April 16 7:00 PM/PST



# Agenda

Lee Fennell

- Welcome and Introductions

Sarah Fennell

- Introduction to eShepherd

Producer Panel

- Kimmy Sue and Daniel Lickteig
- Dave Casorso

Questions and Answers



# House keeping

- This webinar is being recorded and will be posted on the Okanagan Ranch & Fence YouTube channel (@OkanaganRanchandFence).
- Questions will come at the end - If questions come up during the presentation, please feel free to add them to the chat.
- We are aiming for monthly webinars, links will be sent to you
- Presentation slides and notes will be emailed following the webinar.



# Who We Are





**KANAGAN**  
RANCH & FENCE SUPPLIES

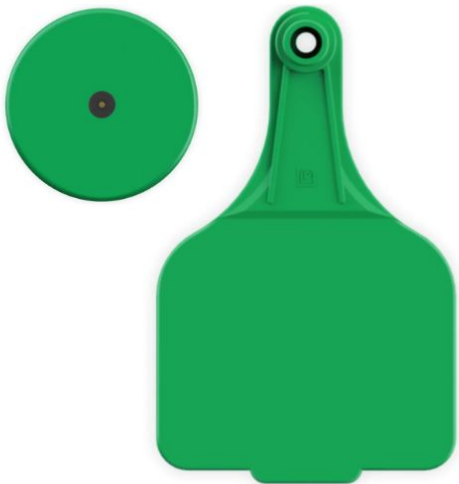


**POWER TAGGER**  
powertagger.com

**KANAGAN**  
RANCH & FENCE SUPPLIES



**KANAGAN**  
RANCH & FENCE SUPPLIES



# Options for Virtual Fences in Canada



**Gallagher eShepherd**  
Cellular or LoRA



**Nofence**  
Cellular



# What is the eShepherd System?

- Virtual fencing system managed remotely via laptop, cellphone, or tablet,
- Sound-based animal training with electric pulse reinforcement.
- Solar-powered, GPS-enabled livestock neckbands.
- Safety features include: breakaway strap, water requirements, return-to-paddock function, cool-down mode, animal and equipment notifications, and a 24-hour failsafe.



# Utilizing Base Stations

## Requirements:

- Power (solar/120v)
- Connectivity
- Topography
- Use case/topography influences quantity/range



## Pricing

Item	Cellular	LoRA
<b>Neckband</b>	minimum 20 neckbands order \$415 each (if order 60 or more, they are \$350.00 each)	minimum 20 neckbands order \$415 each (if order 60 or more, they are \$350.00 each) *starlink costs are extra, if required
<b>Base Station</b>	Not required	\$6,000 (1st) / \$5,000 (2nd)
<b>Long Neckband Chains – Suggested when collaring Bulls (2 pack)</b>	\$25	\$25
<b>Spare pack of top straps (3 pack)</b>	\$90	\$90
<b>Spare pack of locking clip (20 pack)</b>	\$25	\$25
<b>TOTAL</b>	\$8,440 (One time hardware) \$600 (Yearly subscription)	\$13,440 (One time hardware) \$540 (Yearly subscription)

# Funding Options

## **On-Farm Climate Action Fund (IAF)**

- Agrologist review required
- Cost-share: 85%
- Applications open February 26 for the Riparian and Grazing category

## **Canadian Forage and Grasslands Association (CFGGA)**

- Rotational grazing plan required
- Cost-share: 70%
- Applications open February 1–March 15, 2026

## **Beneficial Management Practices (BMP) Program (IAF)**

- Environmental Farm Plan required
- Total funding cap of \$100,000 per farm across eight categories
- Maximum funding amounts:
  - \$70,000 for riparian and grazing
  - \$200,000 for water infrastructure
- Cost-share varies by category, up to 60% for riparian and grazing
- Applications open early 2026



# D-K Ranch

Fossil Oregon

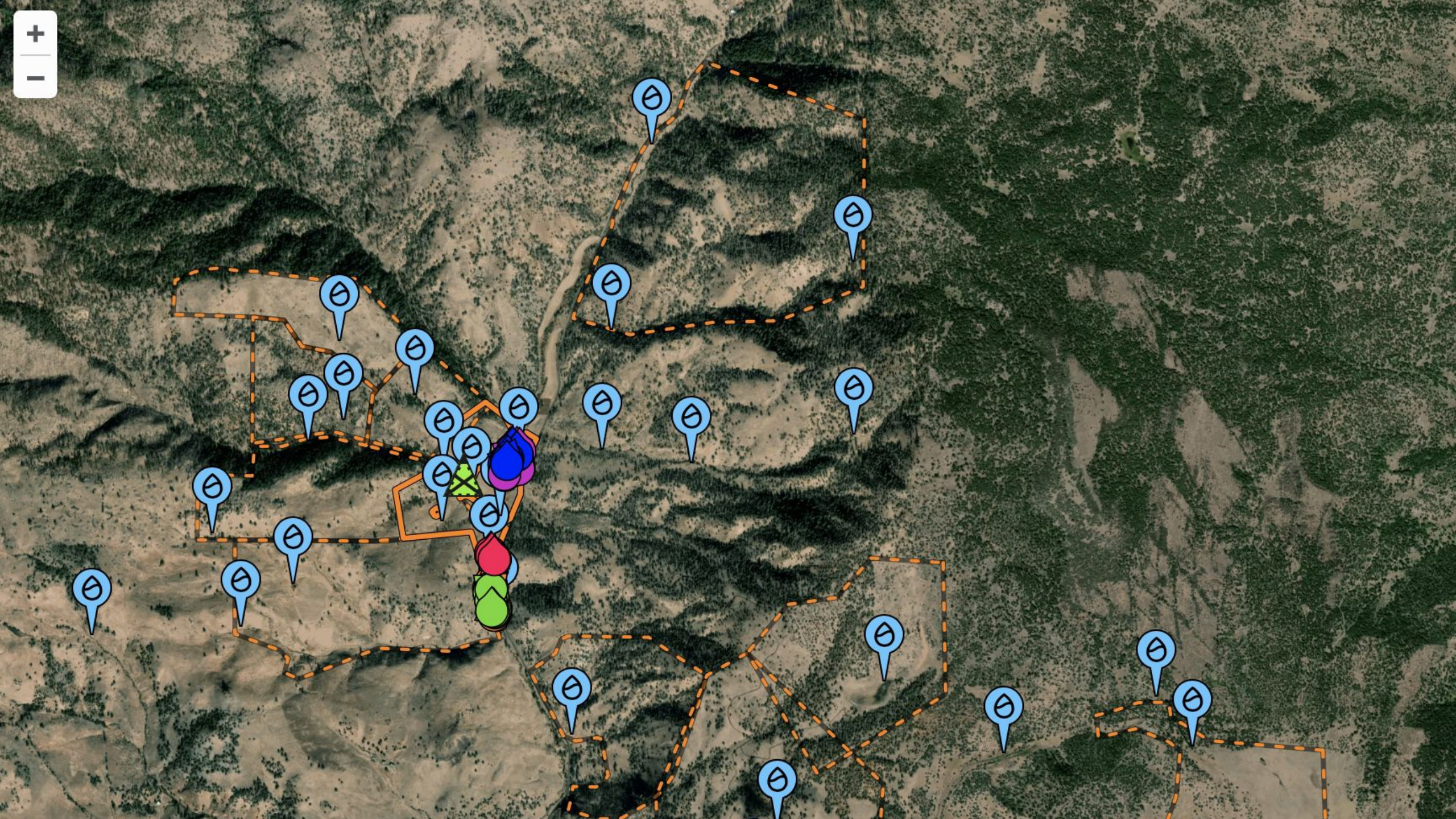




# Run cows on around 8,000 acres.

---

- Combination of private leased ground and our ranch
- Semi mountain terrain.
- Cross fencing are limited and old. Which can make implementing a grazing plan difficult.
- Elk damage to fences. Cows escape pastures through damaged areas.



A man wearing a cowboy hat and a plaid shirt stands on a grassy hillside, looking out over a valley. Next to him is a horse with a brown and white coat, equipped with a brown saddle. The background features rolling hills, scattered trees, and a blue sky with white clouds.

## My experiences with eShepard

---

- Computer program easy to work
- iPhone app excellent when out on the ranch
- Fitting collars simple
- Training cows easy.
- Works great on bulls
- Gallagher very helpful with questions.



# Improve range grasses.

---

- NRCS grant
- Impossible without collars.
- Fence out areas like hay barn
- Build fences in minutes



DE

VID

EID

Tatt

Bre

Sto

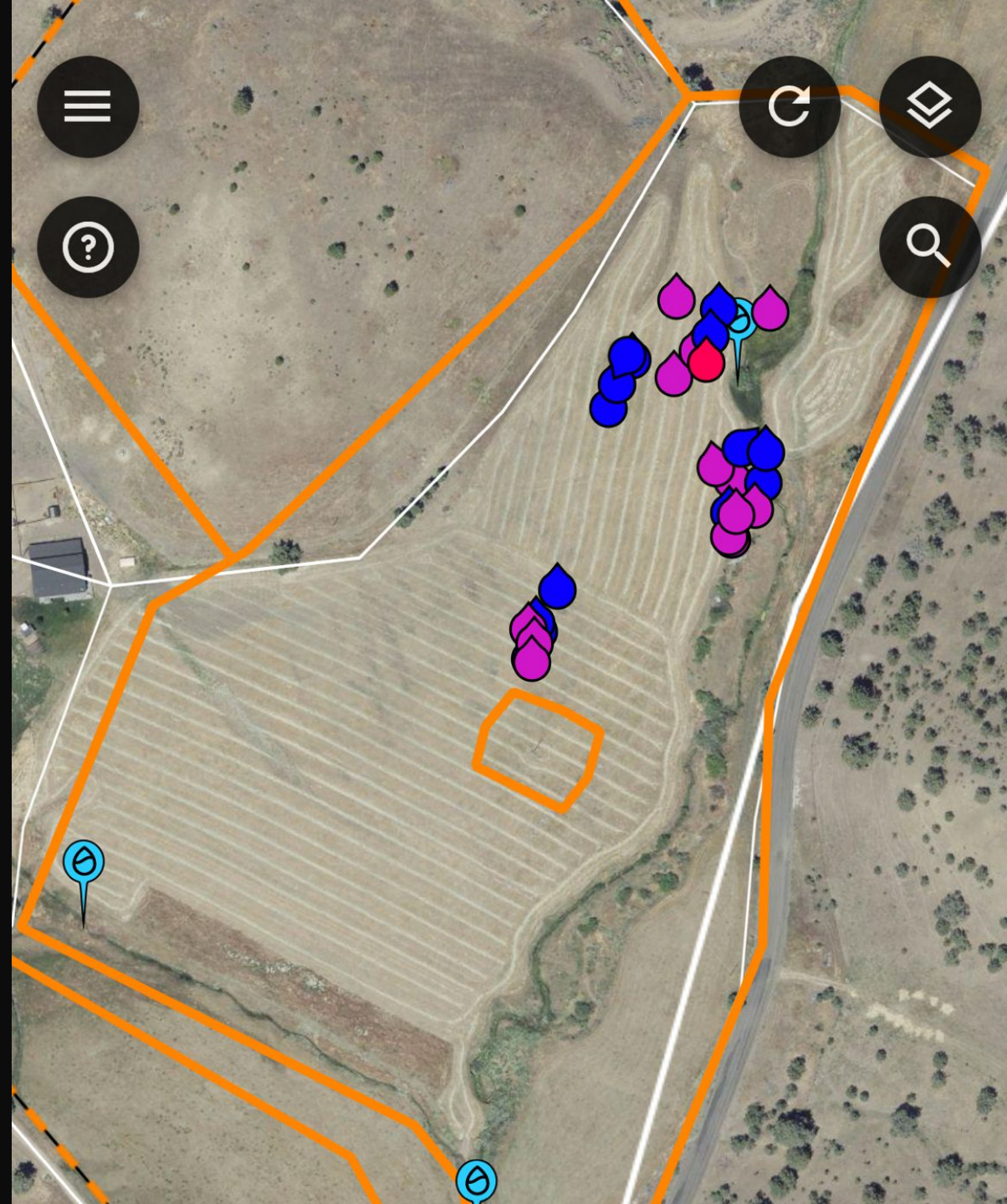
Birt

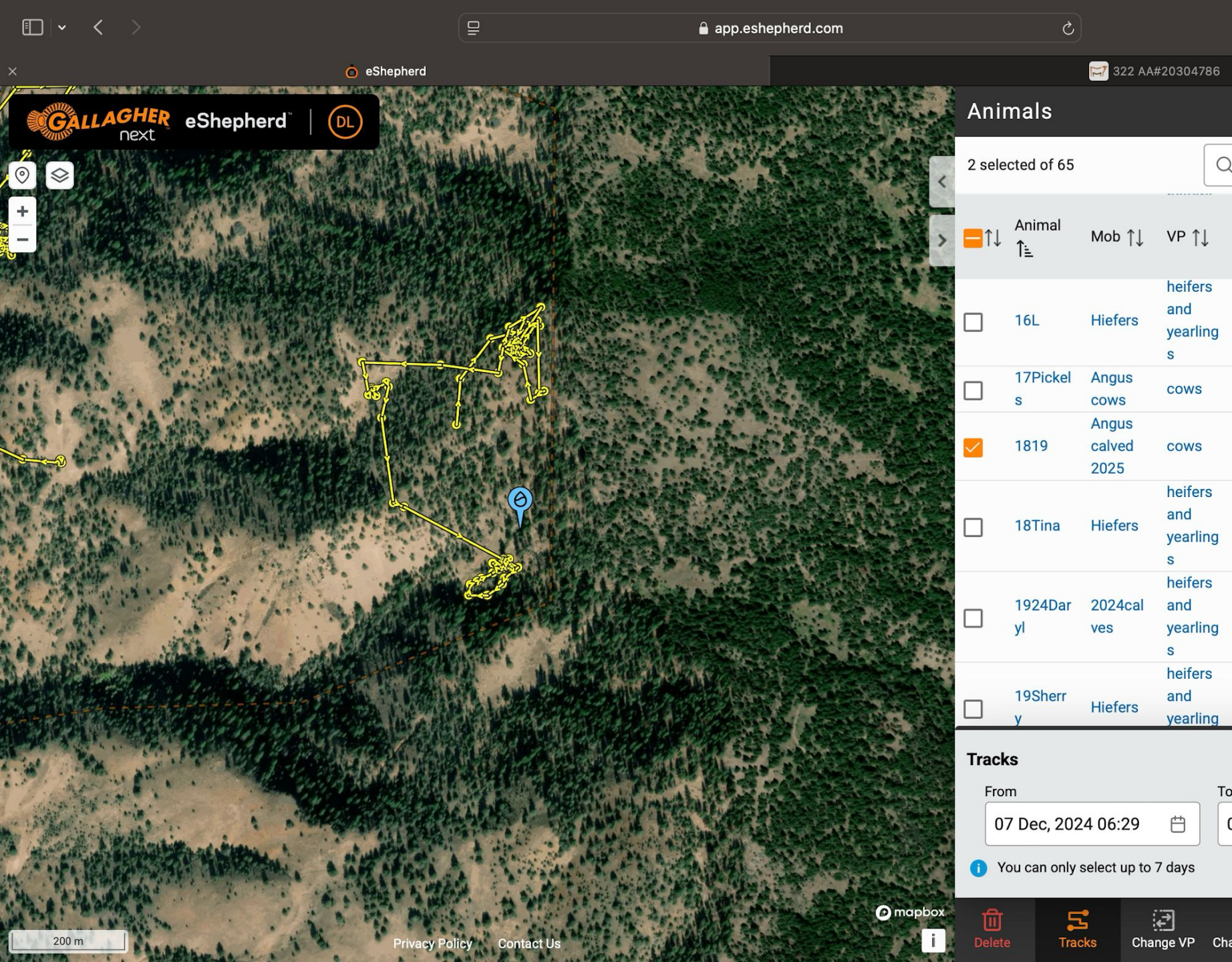
# Calving

- Registered Angus.
- Able to watch behavior and locate calving cows.
- Change colors once calved.



- 
- Blue pregnant
  - Purple calved
- 





- Behavior
- Help identify cows calving
- Cows in distress



# Breeding

---

- Keep bull in close to open cows. Smaller pastures.
- Keep bulls in with designated cows.





# Roundup

---

- Makes counting easy
- Location of missed cows.
- Time saver



# Lessons learned

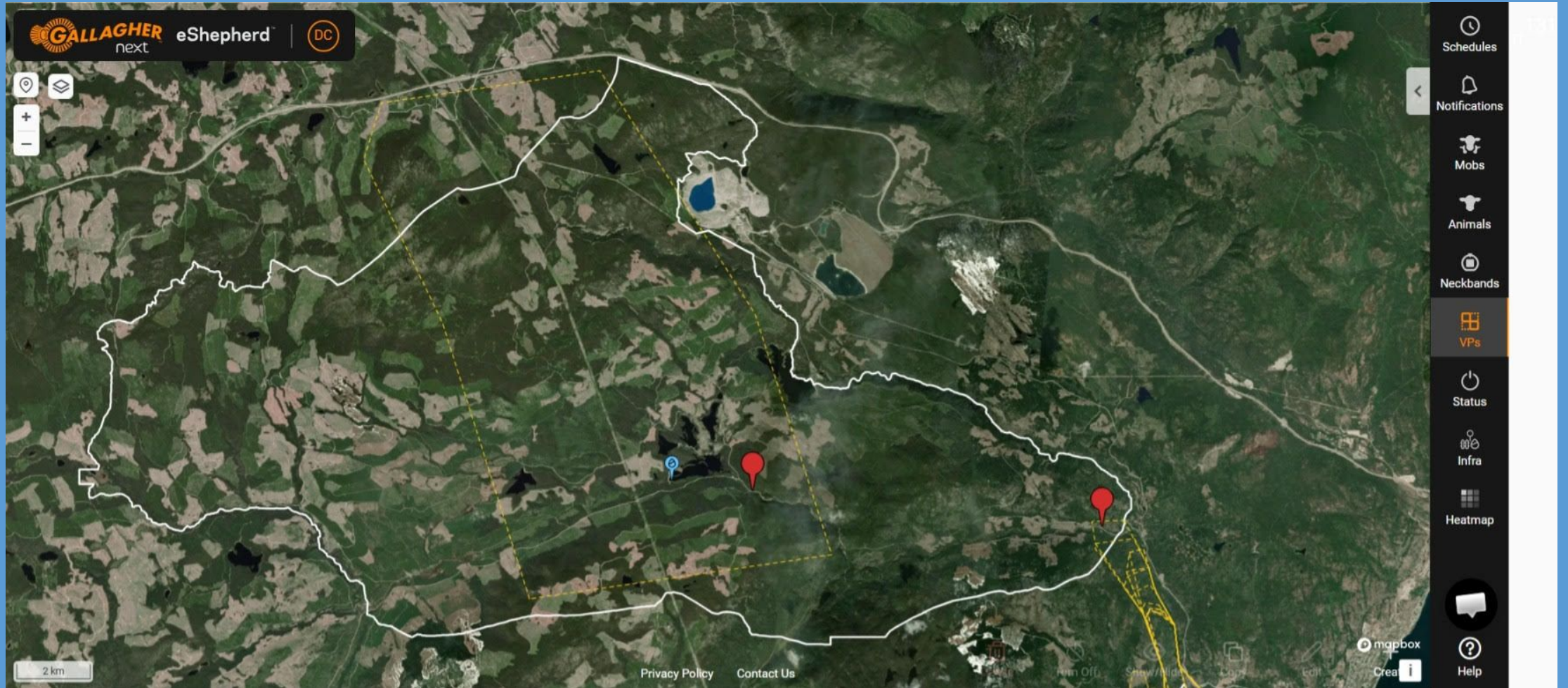
---

- Turn off when moving
  - Training
  - Weaned calves need longer trading time.
  - Return to paddock
- 



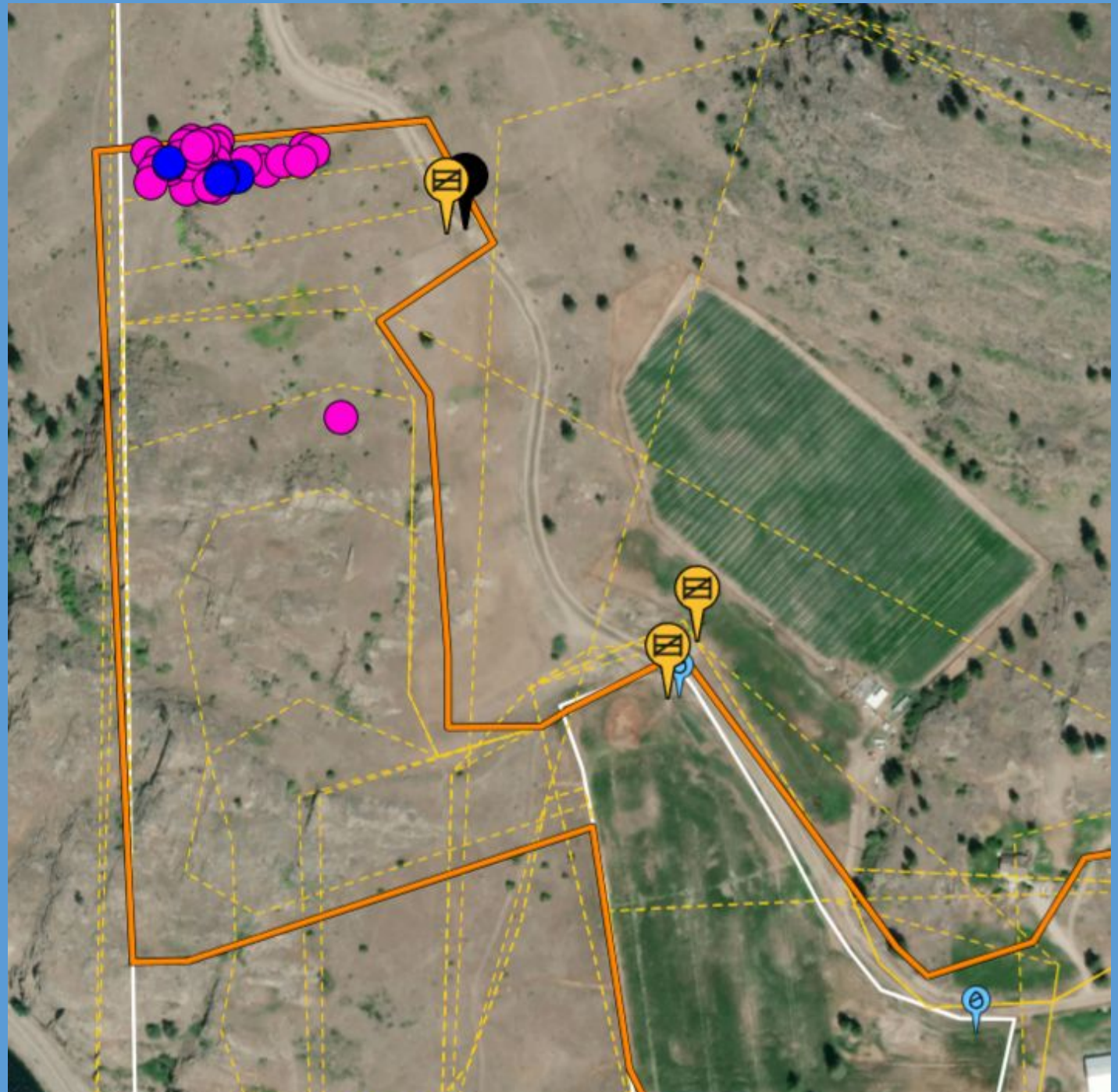
# Dave Casorso - Casorso Ranch - Oliver BC





Range in peachland that Casorso's had collared cattle last summer.

Spring grazing  
right now



Winter feeding until  
February 15



# Q & A



[info@okanaganranchandfence.ca](mailto:info@okanaganranchandfence.ca)



# Q& A

- How to set up a tower
- Longevity of technology
- How it works on rough terrain ie: range.
- Cell coverage and how to determine if you need a base station
- Best way to build virtual paddocks from a single water point in a pasture

