

# FORAGE FIRST

January 2012

"Published by the Peace River Forage Association of British Columbia"

57th Edition

## Talents in Our Midst



*Emily Parson Photography was one example of the "talents in our midst" discovered during the Forage Goods & Services Auction on January 14. Check out her website: <http://www.eparsonsp photography.ca/>*

### 2012 Board of Directors of the Peace River Forage Association of BC

*Dedicated to putting forage first in the hearts, minds and pocketbooks of livestock producers and other forage enthusiasts*

#### Directors:

Rick Kantz, President, Montney	785 1135
Bill Wilson, Treasurer, Dawson Creek	782 2866
Heather Hansen, Vice Pres., Montney	827 6826
Fred Schneider, Director, Pouce Coupe	786 5051
Andrew Clarke, Director, Baldonnel	789 3379
Darwin Linford, Director, Taylor	789 9111
John Kendrew, Director, Pouce Coupe	786 5652

#### Advisors:

Julie Robinson, BC Ministry of Agriculture	787 3241
--	----------

#### Committees:

Wildlife Policy, Ag. Env. Initiative: Rick Kantz  
Soil Conservation Council Canada: Bill Wilson  
R & D, Kiskatinaw Ecological Society: Glenn Hogberg  
Equipment Rental, PRAD Advisory: Walter Fritsche

#### Projects & Contractors:

3D Wildlife Fence, Newsletter: Sandra Burton  
Events & Membership: Chris Thomson  
Website & Newsletter: Kim Strasky  
Wildlife Mitigations Project : Talon Johnson

Visit our website at [www.peaceforage.bc.ca](http://www.peaceforage.bc.ca)



Look Inside This Issue:  
(for paid up members)

Weed Free Hay  
AGM by Candle Light  
Legal Meat  
Auction Highlights  
Auction Thank Yous  
Ecological Winners  
EFP Planner  
Upcoming Events

Inserts:

Forage R & D Projects  
Wildlife Mitigation Factsheet  
Membership Form 2012

(2nd notice - renew by seminar on Feb 21  
&  
receive your complete newsletter



Contact Emily Parson Photography to find out about her special packages at [emily@inspired-wellness.net](mailto:emily@inspired-wellness.net)

## Weed Free Hay

by Amy Farella

The Northeast Invasive Plant Committee (NEIPC) and the Northwest Invasive Plant Council (NWIPC) have partnered together to coordinate the production of certified weed free hay and straw. The goal is to prevent the introduction and spread of invasive species into the vast "weed free" backcountry areas of northern BC. These efforts are thwarted when hay containing weed seeds is unloaded at trailheads and packed into the remote backcountry to feed horses or when weed infested straw is used in reclamation projects.

The 2011 pilot project trained inspectors to inspect hay and straw fields for the invasive species listed under the BC Weed Control Act or the Forest Range and Practices Act (FRPA). The field under inspection was checked for plant parts (seeds, stolons, roots) that could grow into new weeds. In total 179 ha of fields were certified as weed free.

For more information on purchasing Certified Weed Free hay or straw or for information about the Weed Free Pilot please contact the project coordinator Amy Farella, [resources@nwipc.org](mailto:resources@nwipc.org) or 1-866-44WEEDS.

## AGM by Candle Light

by Ann Grover

The Annual General Meeting of the Peace River Forage Association was held December 1, 2011, at the Farmington Hall.

It was conceivably the shortest AGM in the history of AGM's as the power went out just before we sat down to the hearty supper of stew and cheese biscuits. (Thank you Shirley Smithard for the delicious meal.) A rummage in the storage room turned up a handful of Christmas tea-lights, and everyone gathered cozily to enjoy their supper.

Rick Kantz led the AGM by the light of a couple of flashlights, abandoning the agenda due to the power outage. An abbreviated discussion followed regarding the great results of this past year's 3D wildlife fencing. The financial reports were accelerated through to upcoming events of the PRFA, which include the Fundraising Supper and Auction to be held on January 14, 2012, a Genomics Seminar with John Basarab and Tom Lynch-Staunton on February 21, 2012, the Summer Livestock and Forage Tour, June 8 & 9 and a Livestock Handling Clinic with Dillon Biggs on June 23 & 24.

There were several lessons to be learned. The best laid plans may go awry. Productivity is not always proportionate to the length of the meeting. Always carry a flashlight.

# The Road to “Legal Meat” Production & Beyond: Sustainable Food Safety for BC

*Presentation at the Peace River Forage Association's AGM*

*by Shirley Hamblin, Industry Support Leader, Sustainable Food Safety Program, Houston, BC*

## “The Journey Begins”: Code of Practice for the Slaughter & Poultry Processing Industries

- 2004: Meat Inspection Regulation enacted with grace period 2004-2007;
- 2005: Meat Industry Enhancement Strategy (MIES) formed;
- 2006: Meat Transition Assistance Program (MTAP) and Help Desk formed;
- 2007: Class C Licences; Enhanced Feed Ban; Ministry of Environment Code of Practice;
- 2008: Class C Licences revised (end point & bubble zone);
- 2009: Remote Sites Consultation; BC Abattoir Association formed;
- 2010: Class D & E licences created; MTAP closes applications;
- 2011: MIES closes, Sustainable Food Safety Program; BCAISR;
- 2012: MTAP closes all claims.

## Meat Inspection Regulation (MIR) 2004

All meat for sale for human consumption in BC has to be from a licensed, inspected facility.

Rationale: mitigate incidence of animal- and food-borne disease outbreaks via ante-mortem and post-mortem inspection (before & after death).

Intent or desired outcomes: increased food safety, traceability, increased consumer confidence, viable meat processing sector, and consistency across province.

## Impact

Slaughterers' choices:

1. Give up
2. Upgrade abattoir
3. Build new abattoir
4. Go underground

BC Food Processors Association role with MIES & MTAP programs = make it work. There were approximately 300 “slaughterers” in addition to the provincial and federal licensed abattoir operators in this province. Some had health authority inspected facilities, some were cut & wrap operators who provided farm kill services, some were farmers who slaughtered and /or did their own cut & wrap & sold their meat locally.

## Program goals:

**MIES – Meat Industry Enhancement Strategy & MTAP – Meat Transition Assistance Program (\$\$)**

## Current Licencing Status

Facility Licence Type	2004	Since 2005	Nov 2011
Class A or B	11	39	50
Class C temporary	N/A	20	5
Class D and E licences	N/A	63	63
Federally licensed	10	1	11

Note: Two federal facilities recently delisted & took provincial licences (Lawrence Meats and Pitt Meadows)

1. Reasonable access to provincially licensed slaughter facilities for all BC regions.
2. Across all species.
3. Facilitate transition of unlicensed slaughter facilities to licensed facilities.

## Key agencies

- ◇ Ministry of Health: administer food safety policy;
- ◇ Ministry of Agriculture: assist implementation; production permits;
- ◇ Ministry of Environment: administer waste management policy;
- ◇ Centre for Disease Control: manage A/B licensing, inspection;
- ◇ Regional Health Authorities: manage D/E licensing; MIR enforcement;
- ◇ Canadian Food Inspection Agency: field assessment, inspection, SRM waste management;
- ◇ Agricultural Land Commission: farm land use including waste.

## Key associations

BC Food Processors Association

- ◇(MIES/MTAP) assist licensing
- ◇(SFS) support sector post licensing

BC Association of Abattoirs

- ◇Represent Licensed Class A & B abattoirs

Small Scale Food Processor Association

- ◇Small-scale processors
- ◇Deliver Food Safety Systems Implementation Program

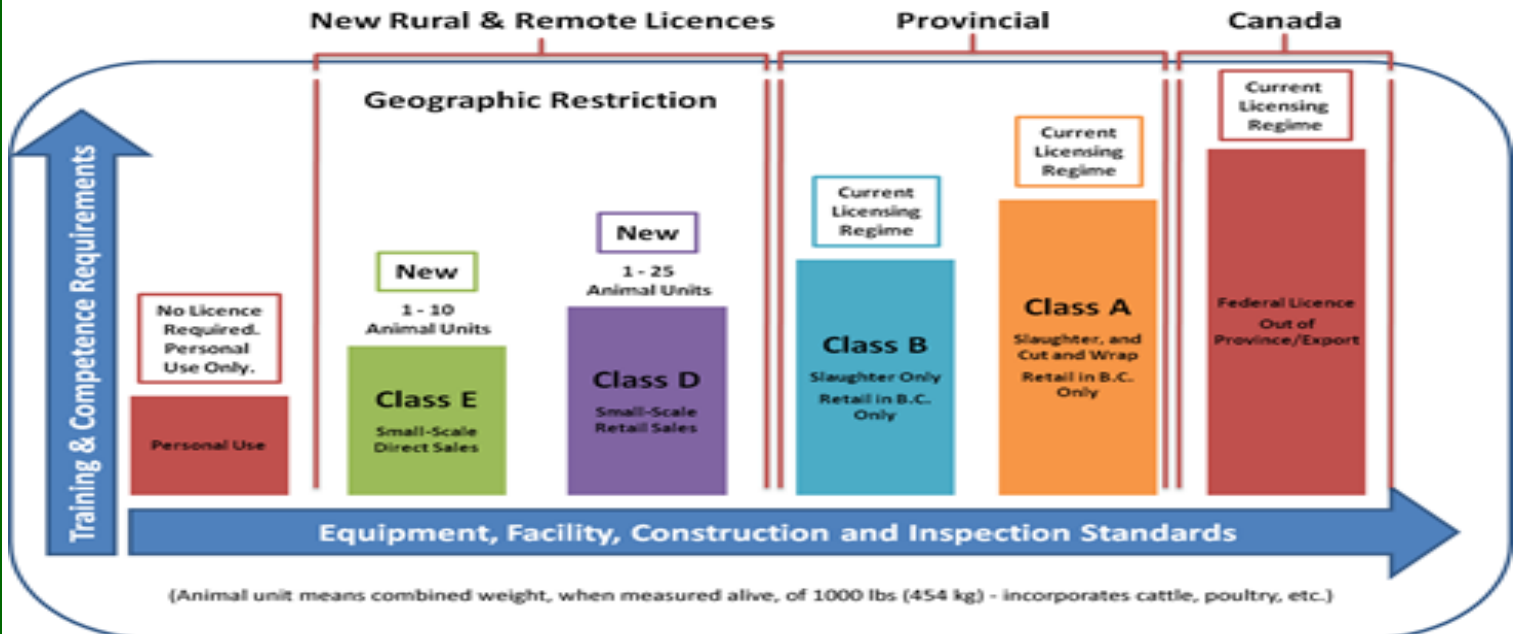


**BC Food Processors Association**

# The Road to “Legal Meat” Continued

## Graduated Licensing System

Note: Class C temporary licences are being phased out.



### BC's Meat Sector

- ◇ Dynamic, unstable, financially vulnerable system;
- ◇ High facility costs, tight margins, limited markets;
- ◇ Sustainability requires business case/policy fit;
- ◇ Provincial variation within facilities;
- ◇ Red meat and poultry separate realities;
- ◇ Producers and processors are interdependent, but few are aligned;
- ◇ Classic supply-demand capacity challenge;
- ◇ Processor anchors the value chain.

Class D & E provide a local service without a major investment. However, Class A & B sustainability is where focus needs to be given the capital input into facilities. Meat Inspection Regulation (MIR) is not an operation lens and it applies to all livestock and meat. Whereas the industry works by commodity, with supply management not “meat sector” management. It’s a span of production across livestock groups. Health based policy is constructed differently compared agriculture based policy, which is constructed across commodities. Without the processor, there is no point in raising the animal for meat.

### Outlook

- ◇ Class D/E for on-farm : challenges in some areas;
- ◇ Uncertainty, turbulence prior to new inspectorate (due 2013);
- ◇ Larger A/B threatened by change in inspectorate;
- ◇ Ongoing policy challenge: different business types;
- ◇ Underground will continue: need for enhanced enforcement;
- ◇ Organizational cultures tend to drift apart - food safety/ security can link agriculture, food, health, land use, small business, tourism and more – need for intentional bridging.

### Desired outcomes

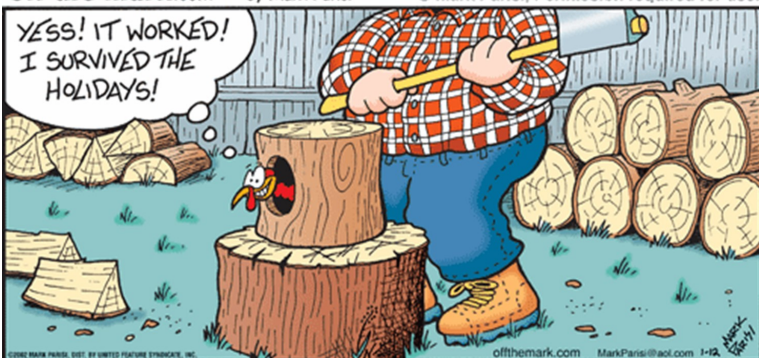
- ◇ Infrastructure for a stronger sector & communities
- ◇ Trusted system that adds value to product;
- ◇ Strong partnerships within and between industry and government;
- ◇ Greater community resilience.

### Challenges and questions

- ◇ How much licensed slaughter capacity is needed?
- ◇ What does each business case require?
- ◇ How can government balance compliance with enforcement (carrot, stick)?
- ◇ What kind of provincial inspection system is needed for Class A & B abattoir sustainability?
- ◇ How can industry work more effectively together, and with government, for sector stability and sustainability?

Thank you Hanna Kabzems for converting this power-point presentation to an article for us.

off the mark.com by Mark Parisi © Mark Parisi, Permission required for use.





# Highlights from the Forage Goods & Services Auction

by Sandra Burton



*In spite of the cold weather, more tables & chairs were needed for the crowd at the Tower Lake Hall.*

Once again the Forage Goods and Services Auction was a huge success. This event seems to follow a recognizable pattern. When the time comes to organize it, the directors get embarrassed about asking people for donations and they wonder if we should cancel it. But after a few phone calls to let people know about the proposed cancelation, we find that Nelda Bennett is very excited about some artwork that she wants to donate, Rose Fuhr is working on a handmade quilt, Ben Hansen has been busy with some creative welding and Arthur Hadland has some seed set aside. So back to the directors, I report "the members really want to have this auction. It's such great way to spend a cold winter evening, that it really isn't about the money anymore." And off we go. Nelda makes more calls, I make more calls, the donations start pouring in and the enthusiasm is infectious. One improvement at this auction was more youth and young families joining us for the fun. We also had more creative donations of services: i.e. the precious gift of people's time.



*Rick Kantz provided a lively commentary as our auctioneer, assisted by models (oops! I mean spotters) Richard Kabzems and Dale Hansen.*



*Sue Hansen and Chris Thomson were a great team keeping up with the action and clerking for the auction. Thank you to Allen and Sheena Pratt, Tower Lake Hall Association who hosted the refreshment bar.*

#	Live Auction Donation	Donated By	Bought By
1	Dead chicken' & bottle of wine	Kantz family	Gord Perry
2	Black & Decker multisocket tool kit	Tim Vanden Heuval, CCS	Keith Carroll
3	Collection of homemade sausage	Fred & Liz Schneider	Julie Robinson
4	Bag of timothy or brome grass seed	Bernard Wolf	Jared Petersen
5	Ivomec & vet package	North Peace Vet Clinic, C & P Spitzer	Arnold Bennett
6	Handmade dressy scarf #1	Theresa Linford	Nelda Bennett
7	6 pack pumpkin wine, delivered	Dennis & Annie Madden	Esbern Hansen
8	1 day field hand service	Tim Singer	Fred Schneider
9	\$200 ArcTech Welding	Earl & Doreen Cusack	Bickford Farms
10	Handmade wheel thrown pottery pc	Rosemary Philips	Sandra Burton
	<i>Draws from the silent auction tables</i>		
10 A	Patio lantern	Arna & Gord Perry	Dan Stocking
11	2 sm buckets collectors item honey	Van Han Apiaries	Dale Morgan
12	20 sq quality hay bales (\$4/bale) x 2 lots	Sunrise Ridge Farms, Clarkes	Sandra Burton
13	1/2 lamb cutted & wrapped	Bear Mtn Farms	Alexandra Banham
14	Vintage calculator	Sharon & Dan Bell	Allen Pratt
15	Certificate #1 & #2 for horse hoof trims	Jessie Petersen	Sharon Bell
16	50 bu Sundre barley (forage variety)	Gramineae Seed Farm, A & L Hadland	Nelda Bennett
17	1 day bookkeeping service	Frances Singer	Keith Carroll
18	Snowshoe, supper & sauna for 6 people	Kabzems Family	Sharlene Kantz
19	Original cards by talented Peace artists	Sue Hansen, Nelda Bennett, Eva Kruse	Keith Carroll
20	Hand made table top easel	Ben Hansen	Dan Bell
	<i>Draws from the silent auction tables</i>		
21	Ice auger 6 inch	John & Diane Kitt	Allen Pratt
22	Collector item Forage hats & massage	PRFA and Emily Parsons	Todd Bondaroff
23	Special spa basket	Brandi & Sean Olmstead	Gord Perry
24	Mini bag of fescue seed for lawn	Don & Asineth Herbison	Jared Petersen
25	Beautiful vintage lamp 35 yr old	Sharon & Dan Bell	Jane Parsons
26	Basket of home preserves	Heather Hansen	Theresa Linford
27	Sunday sleigh ride & hot chocolate	Babe & Beth & their friend Bill Wilson	Sandra Burton
28	Milwaukee cordless rotary grinding tool	Tim Vanden Heuval, CCS	Julie Robinson
29	Framed ink sketch of chickens	Nelda Bennett	Eric Pedersen
30	Hand made table top easel	Ben Hansen	Dale Morgan
	<i>Draws from the silent auction tables</i>		
31	Bag of inoculated alsike clover seed	Mystery Forage Association supporter	Dennis Madden
32	Basket of gourmet goodies	Kim Strasky & Zoe Bassett	Jared Petersen
33	Buffalo skull	Ken Siemens	Gord Perry
34	Home made pie(s)	Wilma Hansen	Allen Pratt
35	Original stain glass & wood creation	Sue & Dale Hansen	Sandra Burton
36	Unique Boreal Experience	Burnem & Gertie Grant, Tate Creek Ranch	Cynthia Lu
37	Handmade teal garden bench	Ben Hansen	Jared Petersen
38	Vintage quilting frame	Arnold & Nelda Bennett	Todd Bondaroff
39	Hand made country style quilt	Rose Fuhr	Nelda Bennett
40	Large basket of preserves & goodies	Arnold & Nelda Bennett	Wilma Hansen
41	Painting of team of horses	Connie Shortt	George Kantz
42	Family photo shoot	Emily Parsons	Kari Bondaroff



#	Silent Auction	Donated By	Purchased By
51-53	Original art cards (pkg of 5)	Nelda Bennett	Marilyn Carroll Julie Robinson Jessie Petersen
56	Crystal wine decanter	Lorne & Ruby McBeth	George Kantz
57	Handmade dressy scarf #2	Theresa Linford	Sara Bennett
58	\$50 gift card for JFD Pub in Charlie Lake	Mackeno Ventures, Jim & Margaret Little	Arna Bennett
59	Blueberry Wine	Diane Kitt	Esbern Hansen
61	Original art cards (pkg of 5)	Sue Hansen	Sharon Bell Asenath Herbison
62	Handmade pottery pc	Rosemary Philips	Sandra Burton
63	Certificate for horses trim	Jessie Petersen	Liz Schneider
64-66	Bags of fescue seed (lawn size)	Don & Asineth Herbison	Chris Thomson Jen Stuart Anne Haycock
71-72	DVD movies	Sharon & Dan Bell	Asenath Herbison Jane Parsons
73	Fishing rod	Jim, Pat & Liam Strasky	Jared Petersen
74-76	Family games	Kabzems family	Sharlene Kantz Asenath Herbison Jared Petersen
77-78	2 brown heavy jackets XXXL	CCS, Tim Vanden Heuval	Allen Pratt Fay Clease
79	Shirt XXL	CCS, Tim Vanden Heuval	Sandra Burton
81	Tour of Victoria Highlands fescues	Allen Dobb	Marilyn Carroll
82	Renowned bale twine cutter	Barrie Sones	Dan Bell
83	Homemade jam with honey	Barbara Sones	Clay Beier
84	Surprise donation	Chuck & Pat Sutherland	Sandra Burton
85-86	Vintage 8 track tapes	Arnold Bennett	Julie Robinson George Kantz
87-88	Videos		Asenath Herbison
89	John Deere Coveralls	Rick Kabzems	Nelda Bennett
90	Coffee Basket	Arna Bennett	Asenath Herbison

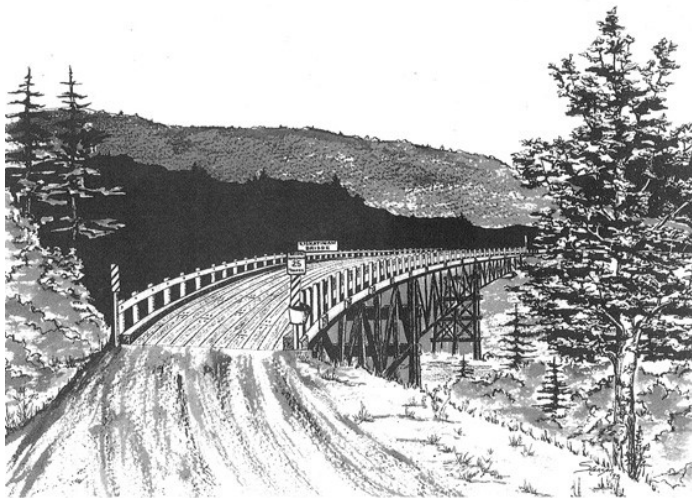
	Contributions Towards Evening of Fun	Donated By
	Auctioneering & spotting	Rick Kantz, Dale Hansen, Rick Kabzems
	Auction clerking	Chris Thomson & Sue Hansen
	Sound system	North Peace 4H Club

***The Peace River Forage Association would like to thank everyone for your support !! You have made this auction fundraiser truly a success & lots of fun too !!***

## Auction Highlights cont'd



*The auctioneer late for the auction... by Nelda Bennett*



*... pausing at the Kiskatinaw River crossing ...  
by Sue Hansen*

Nelda "enjoyed the way the auctioneer was so inventive and entertaining in reading the crowd. He even brought his wife and parents, so what more could we ask for?" Arnold added "I've got no complaints, which is quite something for me!"

The highlight for folks from the west was getting out and off the ranch... in fact some got to talking so much with friends after the auction, they forgot to pay for their purchases. But that is ok, we know where you live.

Proceeds of this auction will go towards the Forage First newsletter, website updating and also put money on the table for negotiating matching funds for our R & D projects. After hall expenses, the auction raised \$5100.

The forage auction seems to draw out the talented artists, potters, wood workers, welders and artisans in our midst. Bidding was fierce for the art cards that were painted or sketched by Nelda Bennett, Sue Hansen and Eva Kruse and for an original painting by Connie Shortt (examples here).

Several items in the silent auction appealed to the kids, and Jared Petersen had the biggest grin when he beat out Rick Thomson for the fishing rod.

There was no shortage of agriculture items on offer like seed, hay bales, farm labour and tools. There was clothing on offer as well, and one local woman must have been cold when she tried to run off with another woman's jacket purchase.



*... to gather a vintage collectors' item to donate to the fundraiser ...  
by Sue Hansen*



*... and finally headed home after the forage auction...  
by Nelda Bennett*



# Ecological Winners in Kiskatinaw Watershed

Blending Family Goals With Waterfowl & Wildlife

by Ernest Nimitz



*Photo 1 & 2: Waterfowl pond and upland hay in summer of 2011.*

## **The Leonard and Molly Donaldson Farm in the Valleyview District near the Kiskatinaw River:**

Establishing, developing and maintaining wildlife habitat can be a full time vocation and involve a lifetime of work and pleasure. This is the case with the Donaldsons.

Leonard comes from pioneer stock; his father and grandfather were in the Dawson Creek area before 1920, and Leonard has lived in the district north and west of Dawson Creek adjacent to the Kiskatinaw River all of his life.

Historically it looks like this farm was part of the wintering area for bison, elk, deer, moose and Native Canadians due to the good supply of food, water and shelter.

The Donaldsons have been interested in waterfowl, songbirds and ungulates, plus beavers, and small mammals for many years. During their working life they were grain farmers with some canola; always wildlife enthusiasts! Now in retirement, they are still wildlife enthusiasts and reside in a nice farm home well protected by a mature multi-row deciduous and evergreen shelterbelt.

### **Transitions & retirement:**

As retirement approached from an active farming life,



*Photo 3: Leonard Donaldson*

Leonard was concerned that the wildlife and waterfowl habitat on their farm should be maintained into the future and he needed to figure out a way to do it. Over the years, he had become familiar with Ducks Unlimited Canada via Murray Clark and the good work that they were involved with in British Columbia, creating habitat for waterfowl and mammals.

As decision time arrived, Leonard decided that Ducks Unlimited Canada was his best option to preserve his farmland as good waterfowl and good moose - deer - elk - songbird - beaver habitat for the long term. He did not want to see his farmland be cleared of all trees and brush corner to corner, and completely drained, just so that it could be part of a bigger grain farm.

### **A working partnership:**

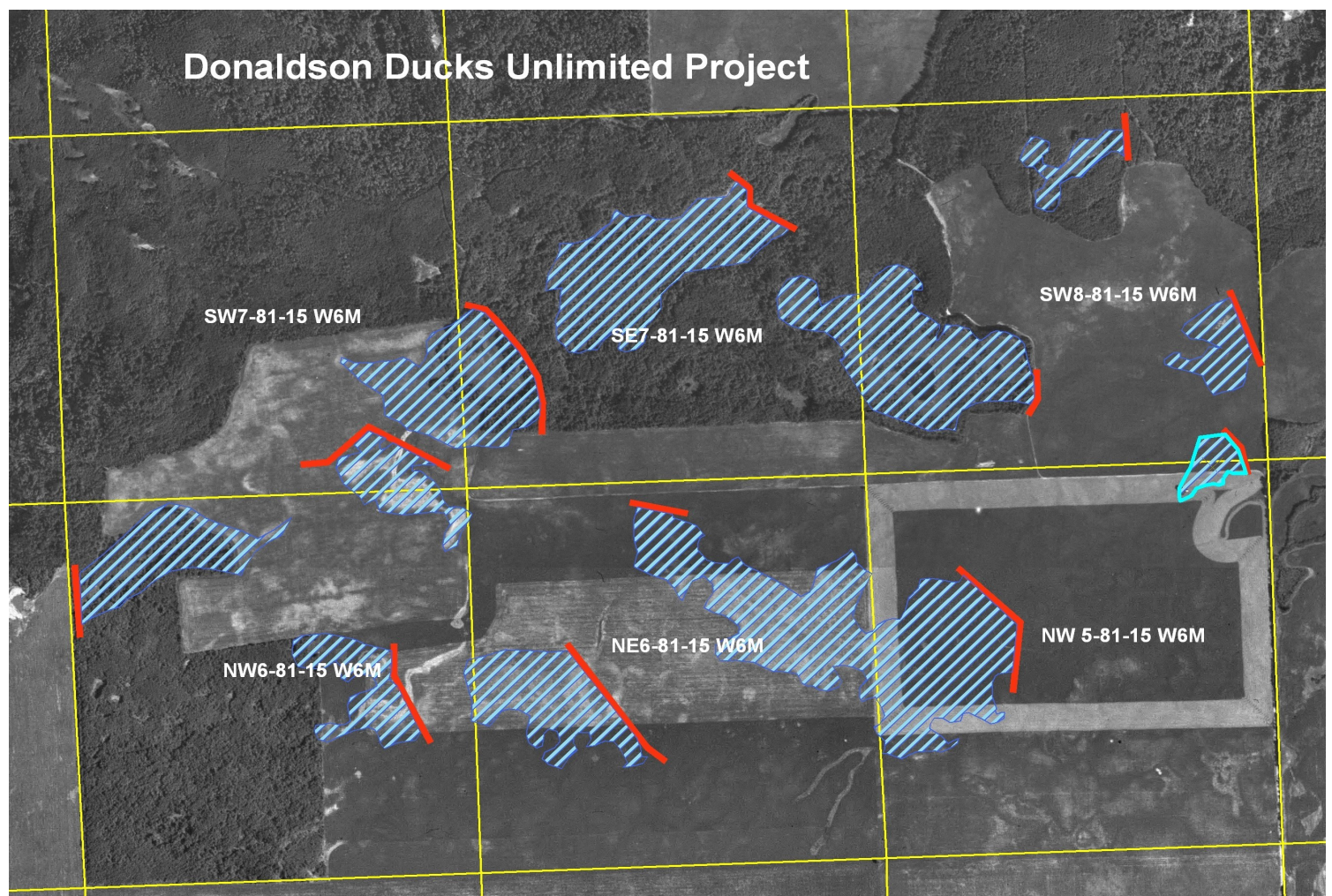
An agreement was made whereby Ducks Unlimited Canada (with the cooperation of the BC government) would purchase five quarters of the farm. Ducks manages these lands for the waterfowl and tame hay production, plus a sixth quarter retained by the Donaldsons. Leonard, Molly and their son, Roland, and his family live on an adjacent half section. Two other 40 acre parcels were also retained for wildlife habitat values, closer to the Kiskatinaw by the Donaldsons.

So today, we have a lot of waterfowl ponds created by DUC for ducks and other water birds (200 acres total when full). There are also several hundred acres of alfalfa and grass hay to cut after mid July each summer to allow waterfowl nesting first in the late spring and early summer. Overall, a connected area of ponds, waterways and wetlands interspersed in the hay producing uplands of the entire six quarters.

### **The end result:**

The DUC agreement has worked out to be a good solution for the waterfowl, wildlife and the Donaldson families.





*Photo 4: Aerial photograph of entire Donaldson Ducks Unlimited Canada Project (6 quarters).*

## **New Hats & New for EFP**

*by Kari Bondaroff*

Hello again to all the Forage First readers. It has been a while since I have been given the opportunity to write for you. To you avid readers, I have been introduced to you many times as, Kari Bondaroff, Range Agrologist with the Ministry of Forests and Range (at that time), Kari Bondaroff, Regional Agrologist, with the Ministry of Agriculture and Lands (at that time), Kari Bondaroff, Manure Maven, Kari Bondaroff, Senior Spatial Analyst, with the Ministry of Agriculture, and finally, Kari Bondaroff, Sheep Producer. This time, I would like to introduce myself with 2 new and separate hats. I have recently made a career change back to my Education background as a School District 59 Teacher at Peace View Elementary. As well, I have taken part in some very exciting training opportunities in Abbotsford and am on my way to being an **Environmental Farm Planning Advisor for the Peace River Region**.

For me, this program highlights the reasons that I wanted to work in Agriculture. This program offers free planning advisors to assist producers in understanding the environmental impacts that are occurring and can be reduced, by assisting producers to create an Environmental Farm Plan (EFP) pertaining to the individual's farm. This plan is a snap-shot in time that allows the producer to set goals to improve their current practices and better plan their improvements in the future. Education, collaboration, teamwork, and desire to better farming practices and environmental impacts, I ask you, what could be better?

I look forward to working with you all and hope that you at least take the opportunity to pick up the phone, or email me, to start the communications about the Environmental Planning Process, and how it can better your farming practices. I can be reached by phone at (250)467-3918, or by email at [Kari.Bondaroff@gmail.com](mailto:Kari.Bondaroff@gmail.com).



# THE BISON INDUSTRY IS GROWING!

HERE ARE SOME EVENTS YOU WONT' WANT TO MISS!

## **National Bison Association**

### **Winter Conference and Gold Trophy Show & Sale**

January 18-21, 2012 Denver CO Call 303-292-2833 or visit

[www.bisoncentral.com](http://www.bisoncentral.com) for details

## **Saskatchewan Bison Association**

### **AGM and Premium Show & Sale**

March 2-3, 2012 North Battleford SK Call 306.522.4766

## **Bison Producers of Alberta**

### **Wildrose Bison Show & Sale/Convention**

March 16-17, 2012 Ponoka AB Call 780.955.1955

## **Manitoba Bison Association**

### **Great Spirit Bison Show & Sale**

March 30-31, 2012 Brandon MB Call 780.790.1541

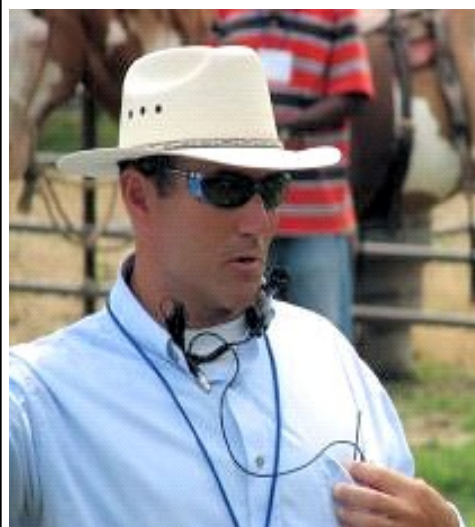
## **IBC 2012**

### **(International Bison Conference)**

"Experience The Difference"

July 23-28, 2012 Quebec City QC

Visit [www.bison2012.com](http://www.bison2012.com) for details



**Dylan Biggs**

**Cattle Handling Clinic**

**June 23 and 24, 2011**

**at Fred Schneider's in**

**Pouce Coupe, BC.**

**Come out to this exciting clinic and learn to move your cattle with less stress for you and your cattle!**

**\$150 for hands-on 2 day clinic (10 spots left)**

**\$ 75 for observer of 2 day clinic**

**Lunch included both days**

**To register call Chris at 250 789 6885 or 250 793 8916**

*Brought to you by the Peace River Forage Association of BC and the North Peace Applied Research Association of Manning:*

## **APPLYING GENOMICS ON THE RANCH - BREEDING FOR IMPROVED FEED EFFICIENCY IN BEEF CATTLE**



### **KEYNOTE SPEAKERS:**

**JOHN BASARAB**, LACOMBE RESEARCH STATION

**TOM LYNCH-STAUTON**, LIVESTOCK GENTEC, U OF A

**Tuesday, Feb 21  
Taylor Community Church  
@ 3 p.m.**

*To register call Chris @ 250-789-6885 or  
250-793-8916*

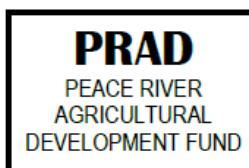
**Wednesday, Feb 22  
Pomeroy Inn, Grimshaw  
@ 4 p.m.**

*To register call Nora @ 780-836-3354  
or email [npara1@telus.net](mailto:npara1@telus.net)*

**Registration includes supper: \$30 for members; \$50 for couples &  
\$40 for non-members**



Peace River Forage Association  
of British Columbia



**Government of Alberta** ■  
Agriculture and Rural Development

**Watch for Information on the  
2012 Collaborative Tour to Manning, AB and area  
June 8 and 9, 2012  
Brought to you by**

Peace River Forage Association  
of British Columbia



and

